



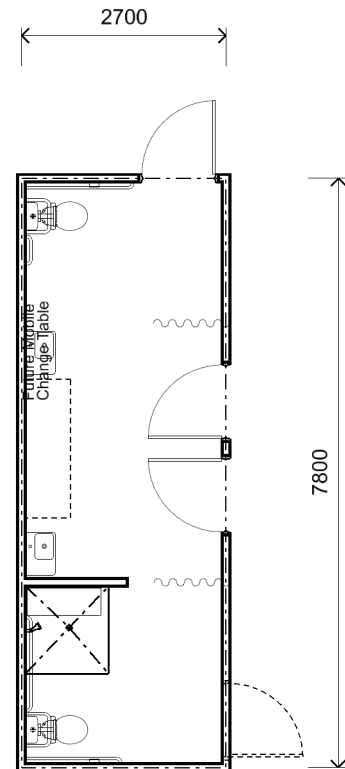
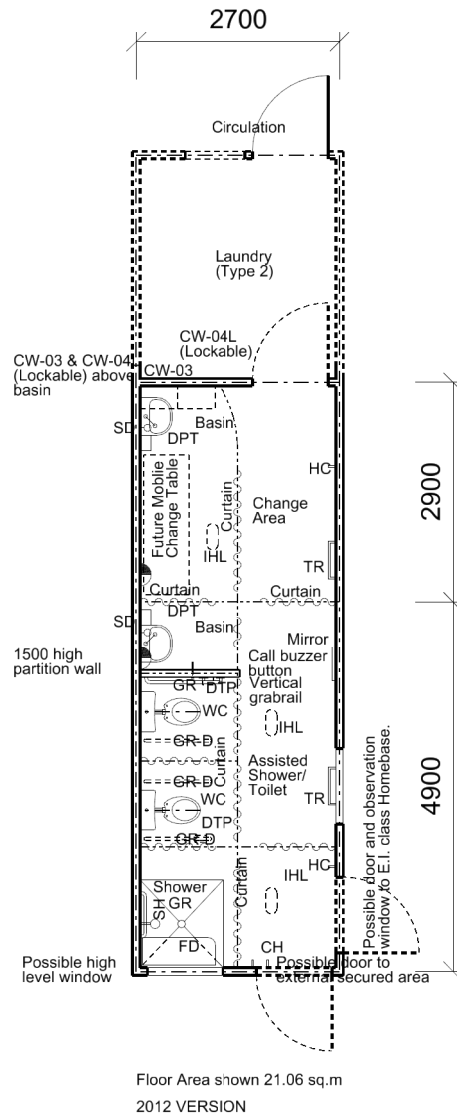
**SCHOOL TYPE**  
**KEY LEARNING / SUPPORT AREA**  
**ROOM / SPACE**  
**TYPE / ID**

Schools for Specific Purposes  
Student Services Unit  
Access Toilets / Showers / Change Room  
Type 3 - SSP603.13

**SCHEDULE AREA** 20m<sup>2</sup>

**NOTES**

- 1 For 1-2 HBs
- 2 Circulation and movement of equipment important.



**FURNITURE**

ID	QUANTITY
C-09	1
CW-03	1

Furniture quantities are indicative and are related to the floor plan indicated. Actual furniture selection and quantities will be dependent on the approved design, specific school needs, student ages, student capabilities and their teachers.

**REVISION DATE**  
19 DECEMBER 2013

The information on this sheet once printed/exported is classed as an uncontrolled copy.  
The currency of the information should be checked by visiting the EFSG website prior to using the information for any purposes.

1:100 @ A4 0 1 2 3 4m