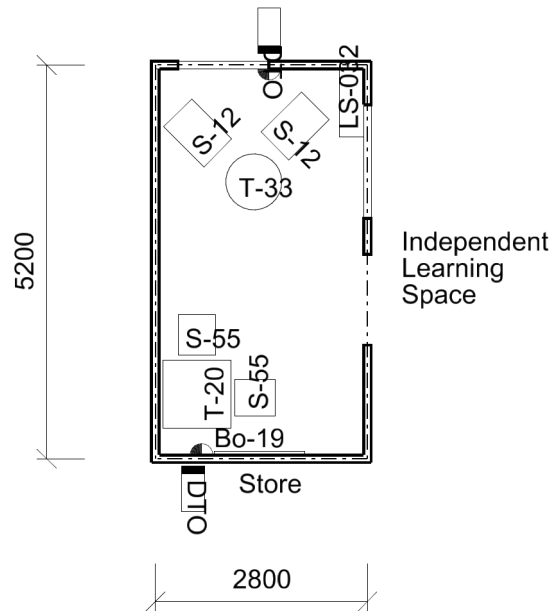




**SCHOOL TYPE**  
**KEY LEARNING / SUPPORT AREA**  
**ROOM / SPACE**  
**TYPE / ID**

Schools for Specific Purposes  
 Tutorial Learning Centre  
 Seminar Room - Tutorial  
 Type 1 - SSP450.02

**SCHEDULE AREA** 15m<sup>2</sup>



Floor Area shown 14.56 sq.m

**FURNITURE**

ID	QUANTITY
Bo-19	1
LS-032	1
S-12	2
S-55	2
T-20	1
T-33	1

Furniture quantities are indicative and are related to the floor plan indicated. Actual furniture selection and quantities will be dependent on the approved design, specific school needs, student ages, student capabilities and their teachers.

1:100 @ A4 0 1 2 3 4m

**REVISION DATE**  
 19 DECEMBER 2013

The information on this sheet once printed/exported is classed as an uncontrolled copy.  
 The currency of the information should be checked by visiting the EFSG website prior to using the information for any purposes.