



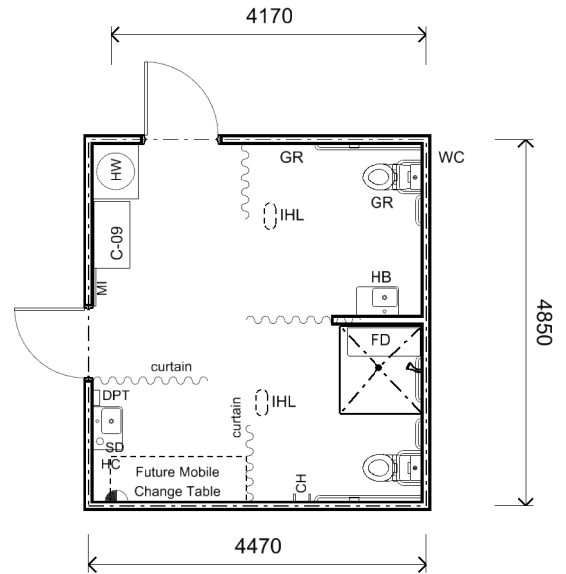
**SCHOOL TYPE**  
**KEY LEARNING / SUPPORT AREA**  
**ROOM / SPACE**  
**TYPE / ID**

Secondary  
Student Amenities  
Access Shower / Toilet / Change  
Type 3 - HS603.07

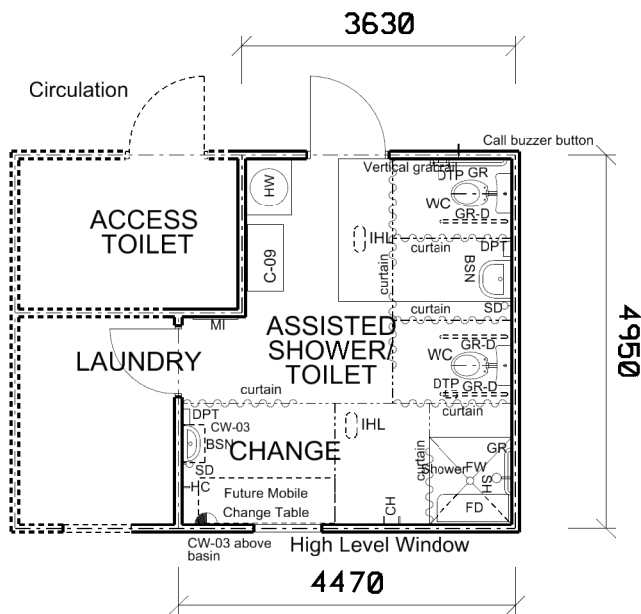
**SCHEDULE AREA** 21m<sup>2</sup>

**NOTES**

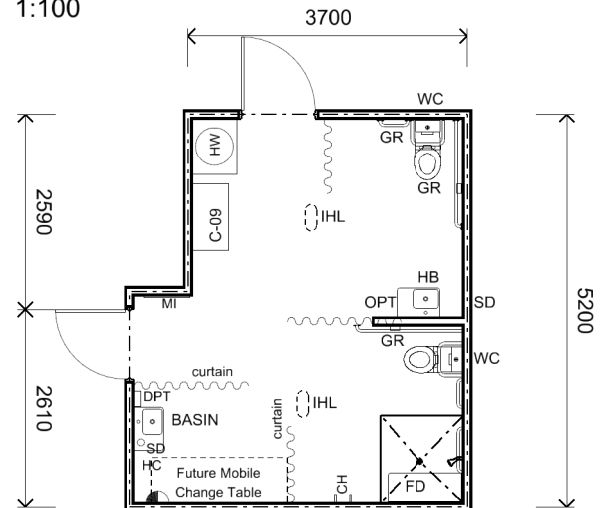
- 1 Circulation and movement of equipment important
- 2 For one to two GLSs



Floor Area shown 20.64 sq.m  
1:100



Floor Area shown 20.34 sq.m  
1:100



Floor Area shown 20.36 sq.m  
1:100

**FURNITURE**

ID	QUANTITY
C-09	1
CW-03	1

Furniture quantities are indicative and are related to the floor plan indicated. Actual furniture selection and quantities will be dependent on the approved design, specific school needs, student ages, student capabilities and their teachers.

**REVISION DATE**  
7 NOVEMBER 2013

The information on this sheet once printed/exported is classed as an uncontrolled copy.  
The currency of the information should be checked by visiting the EFSG website prior to using the information for any purposes.

1:100 @ A4 0 1 2 3 4m